



Global @dvisor

Global Views on Immigration

August 2011



*A Global @dvisory G@22
Immigration*



These are the findings of the **Global @dvisor Wave 22 (G@22)**, an Ipsos survey conducted between **June 15th and June 28th, 2011**.

SURVEY METHOD	COUNTRIES	SAMPLE	WEIGHTING
<ul style="list-style-type: none">•The survey instrument is conducted monthly in 23 countries around the world via the Ipsos Online Panel system.	<ul style="list-style-type: none">•The countries reporting herein are Argentina, Australia, Belgium, Brazil, Canada, France, Great Britain, Germany, Hungary, India, Indonesia, Italy, Japan, Mexico, Poland, Russia, Saudi Arabia, South Africa, South Korea, Spain, Sweden, Turkey and the United States of America.	<ul style="list-style-type: none">•For the results of the survey presented herein, an international sample of 17,601 adults age 18-64 in the US and Canada, and age 16-64 in all other countries, were interviewed. Approximately 1000+ individuals participated on a country by country basis via the Ipsos Online Panel with the exception of Argentina, Belgium, Indonesia, Mexico, Poland, Saudi Arabia, South Africa, South Korea, Sweden and Turkey, where each have a sample approximately 500+.	<ul style="list-style-type: none">•Weighting was then employed to balance demographics and ensure that the sample's composition reflects that of the adult population according to the most recent country Census data, and to provide results intended to approximate the sample universe. A survey with an unweighted probability sample of this size and a 100% response rate would have an estimated margin of error of +/-3.1 percentage points for a sample of 1,000 and an estimated margin of error of +/- 4.5 percentage points 19 times out of 20 per country of what the results would have been had the entire population of adults in that country had been polled. All sample surveys and polls may be subject to other sources of error, including, but not limited to coverage error, and measurement error.



Analytic Components...Questions Asked Of All Respondents:

Over the last 5 years, in your opinion has the amount of migrants in [country]....?

- a. Increased a lot
- b. Increased a little
- c. Stayed the same
- d. Decreased a little
- e. Decreased a lot

Would you say that immigration has generally had a positive or negative impact on [country]?

- a. Very positive
- b. Fairly positive
- c. Neither positive or negative
- d. Fairly negative
- e. Very negative
- f. Don't know

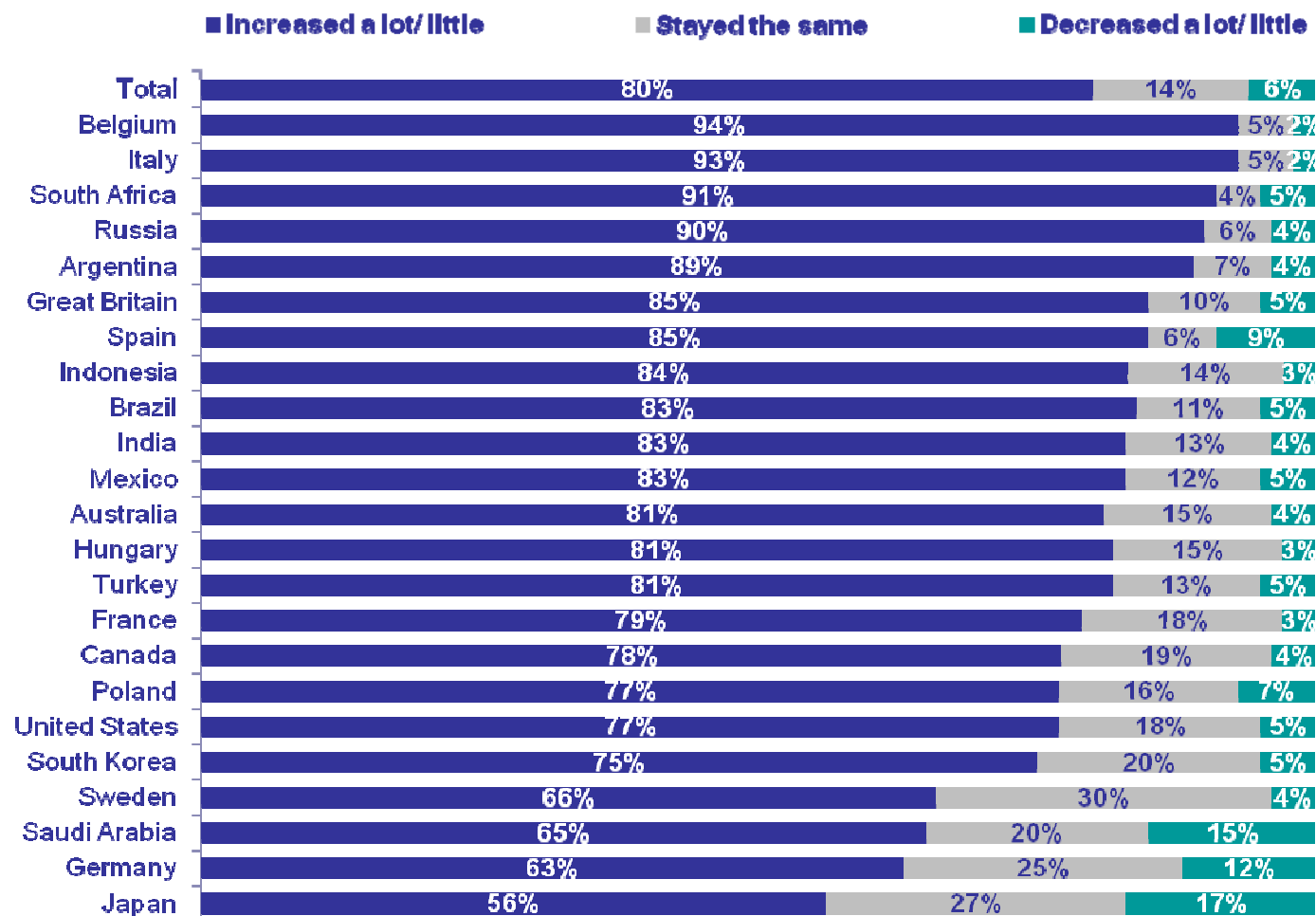
Please tell whether you agree or disagree with each of the following statements.

- g. Immigration is good for the economy of [country]
- h. Immigrants make [country] a more interesting place to live
- i. Immigration has placed too much pressure on public services in [country] (for example, health, transport, educational services)
- j. Immigrants in [country] have made it more difficult for [host country nationality] people to get jobs
- k. Priority should be given to immigrants with higher education and qualifications who can fill shortages among certain professions in [country].
- l. There are too many immigrants in our country.

Strongly agree
Tend to agree
Neither agree nor disagree
Tend to disagree
Strongly disagree
Don't know



OVER THE LAST 5 YEARS, IN YOUR OPINION HAS THE AMOUNT OF MIGRANTS IN [COUNTRY]...

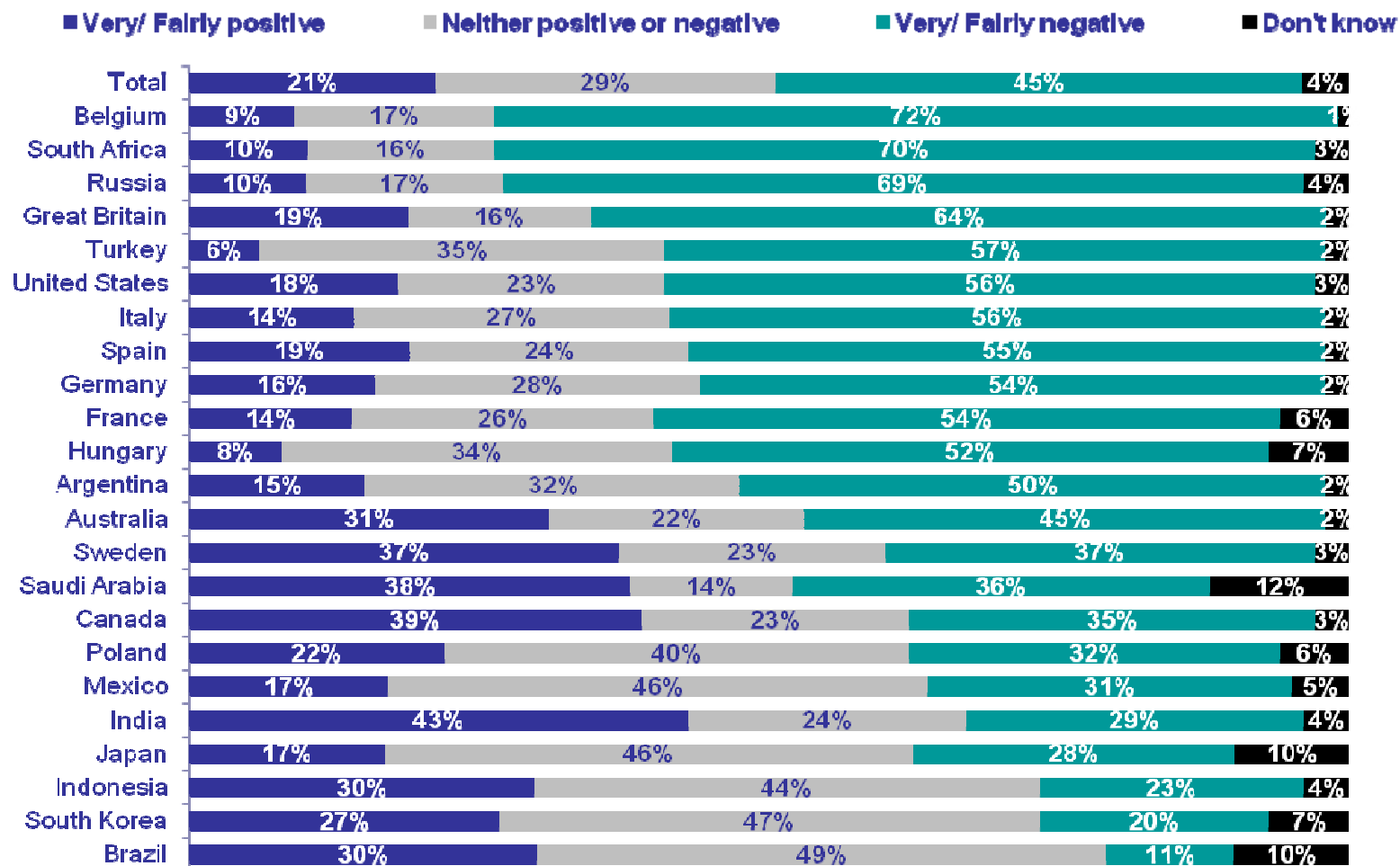


Over the last 5 years, in your opinion has the amount of migrants in ...?
Base: All Respondents n= 17,601

*A Global @dvisory G@22
Immigration*



WOULD YOU SAY THAT IMMIGRATION HAS GENERALLY HAD A POSTIVE OR NEGATIVE IMPACT ON [COUNTRY]?

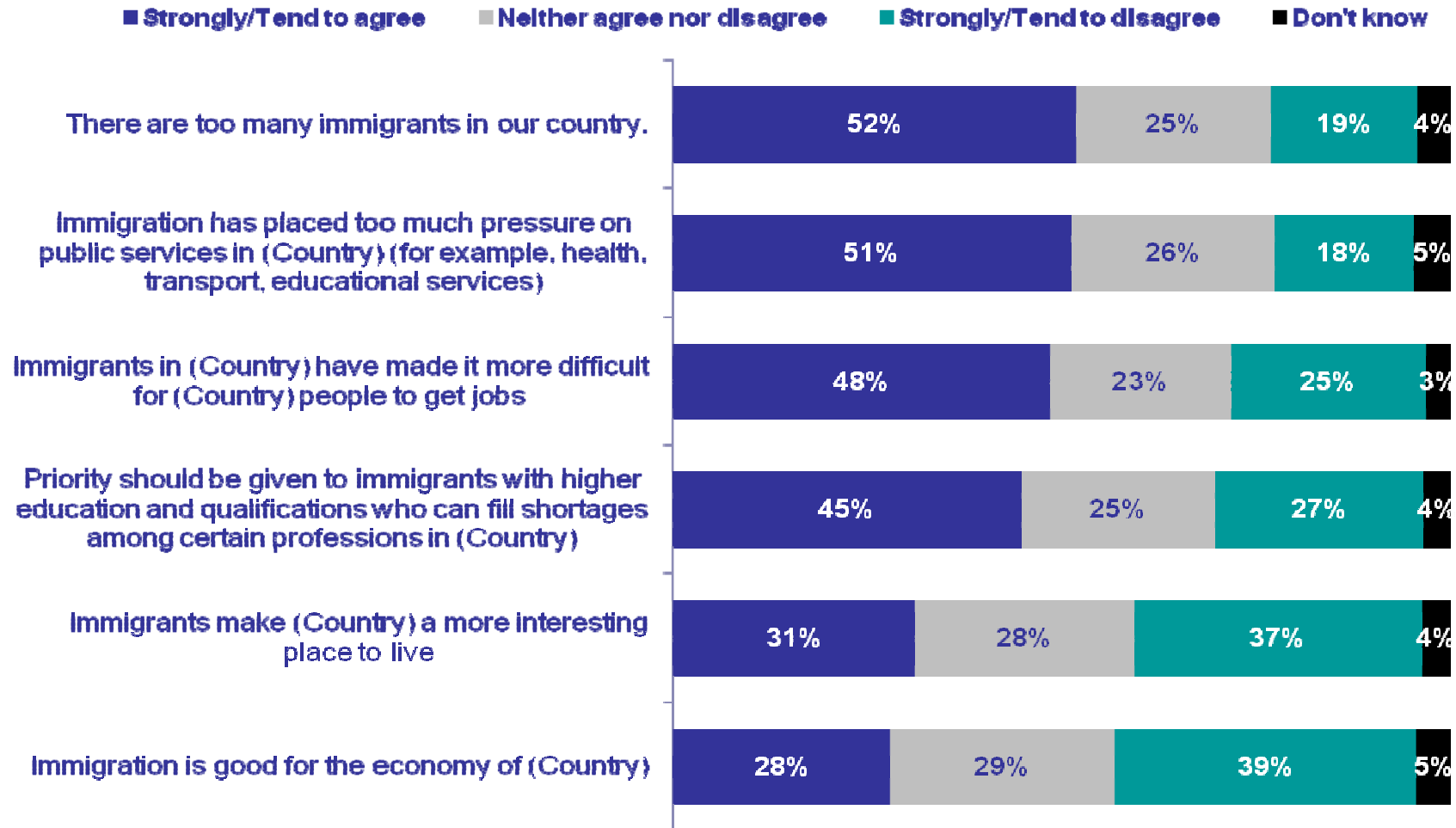


Would you say that immigration has generally had a postive or negative impact on ...?
Base: All Respondents n= 17,601

*A Global @dvisory G@22
Immigration*



PLEASE TELL WHETHER YOU AGREE OR DISAGREE WITH EACH OF THE FOLLOWING STATEMENTS...

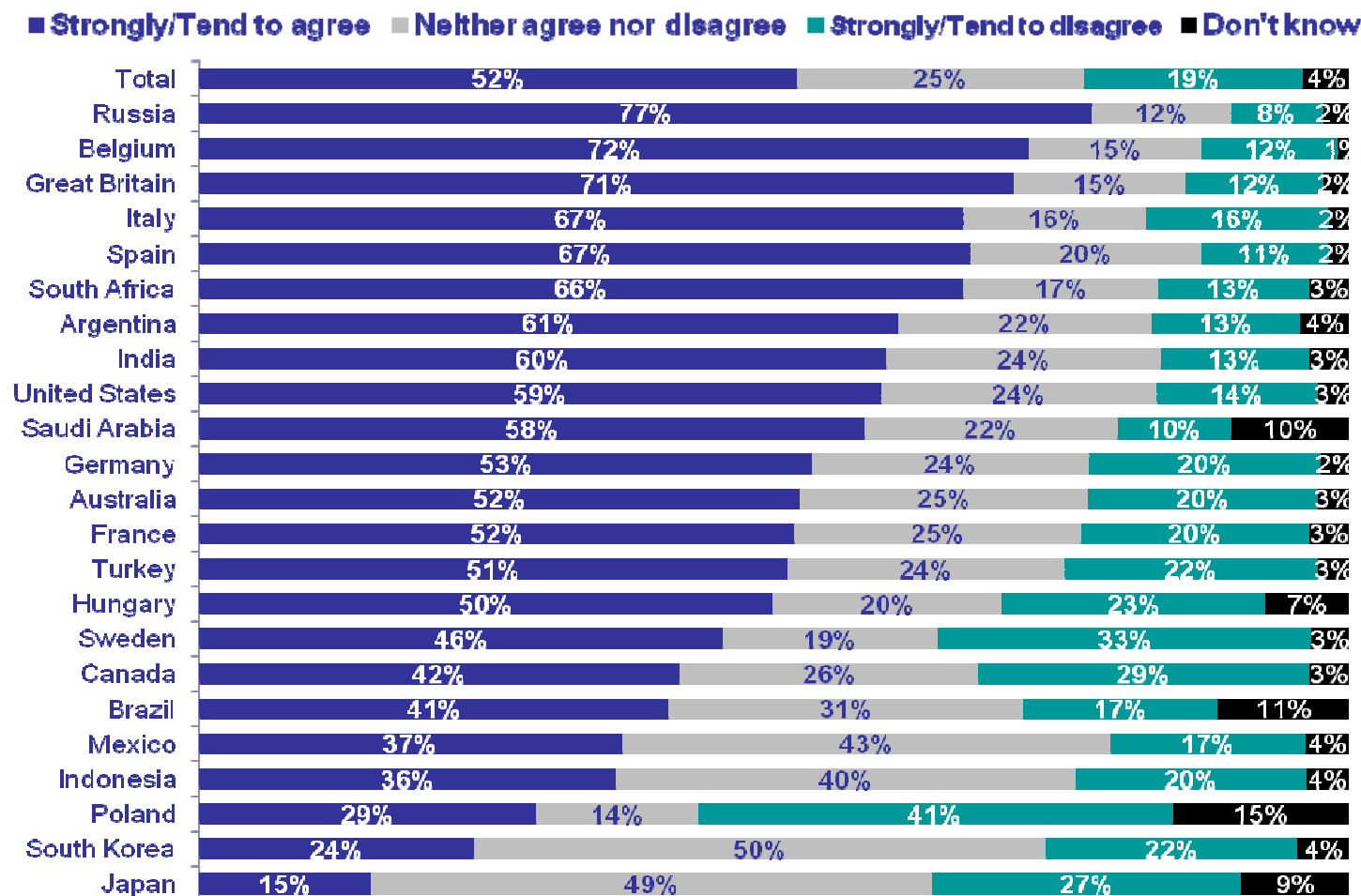


Please tell whether you agree or disagree with each of the following statements.
Base: All Respondents n=17,601

*A Global @dvisory G@22
Immigration*



THERE ARE TOO MANY IMMIGRANTS IN OUR COUNTRY...

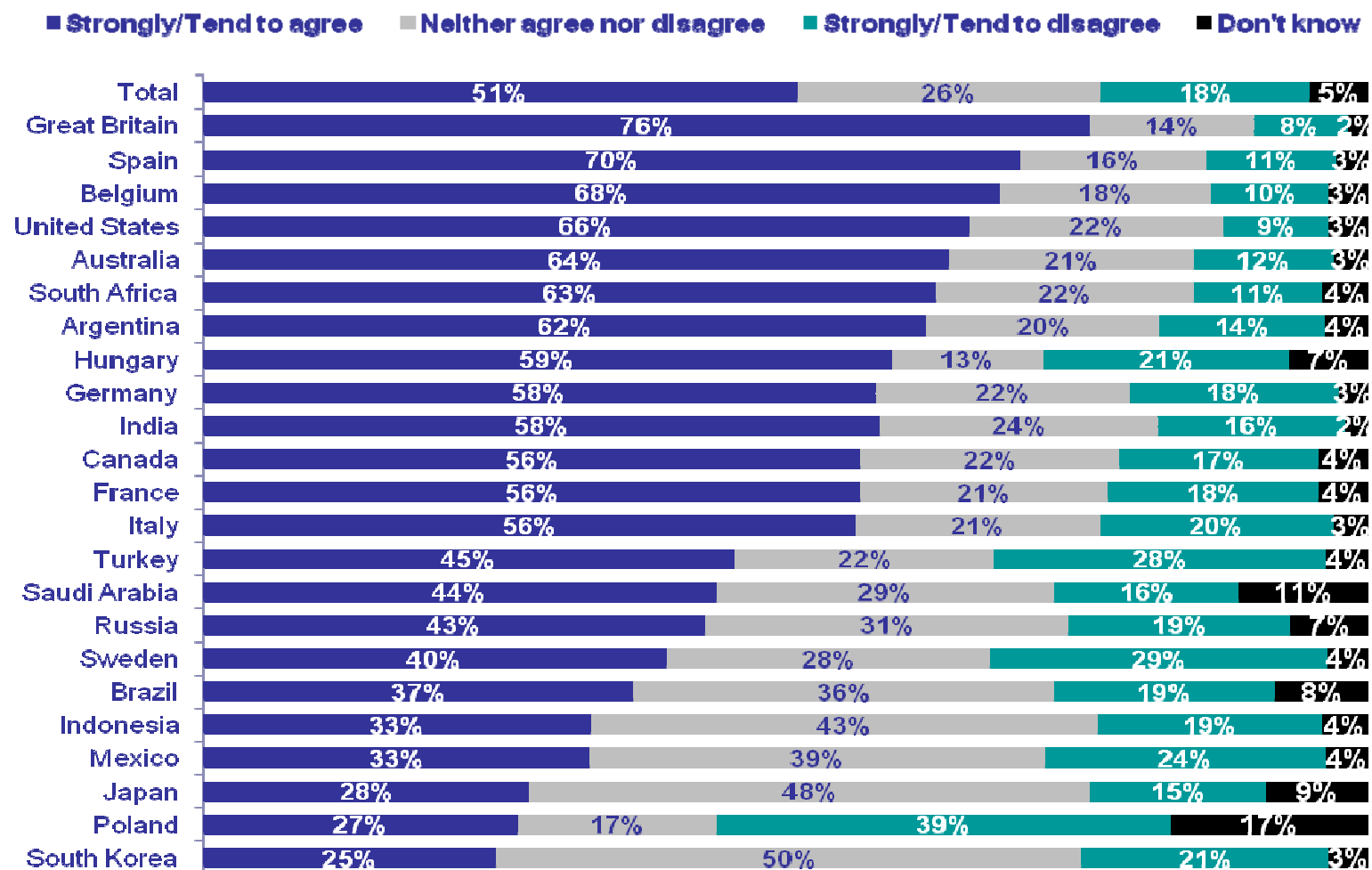


Please tell whether you agree or disagree with each of the following statements.
Base: All Respondents n=17,601

A Global @dvisory G@22
Immigration



IMMIGRATION HAS PLACED TOO MUCH PRESSURE ON PUBLIC SERVICES IN [COUNTRY] (FOR EXAMPLE, HEALTH, TRANSPORT, EDUCATIONAL SERVICES)...

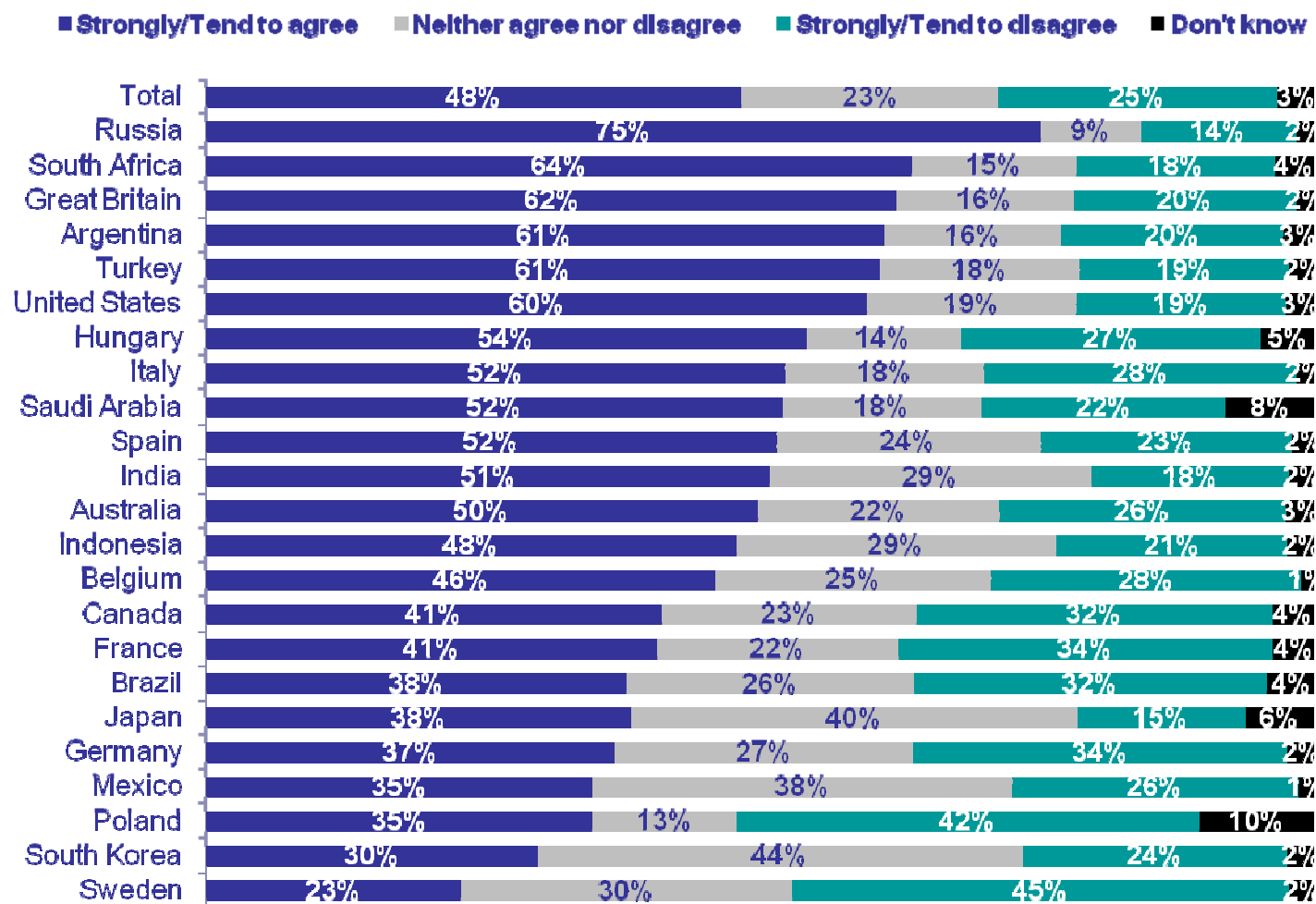


Please tell whether you agree or disagree with each of the following statements.
Base: All Respondents n=17,601

*A Global @dvisory G@22
Immigration*



IMMIGRANTS IN [COUNTRY] HAVE MADE IT MORE DIFFICULT FOR [COUNTRY] PEOPLE TO GET JOBS...

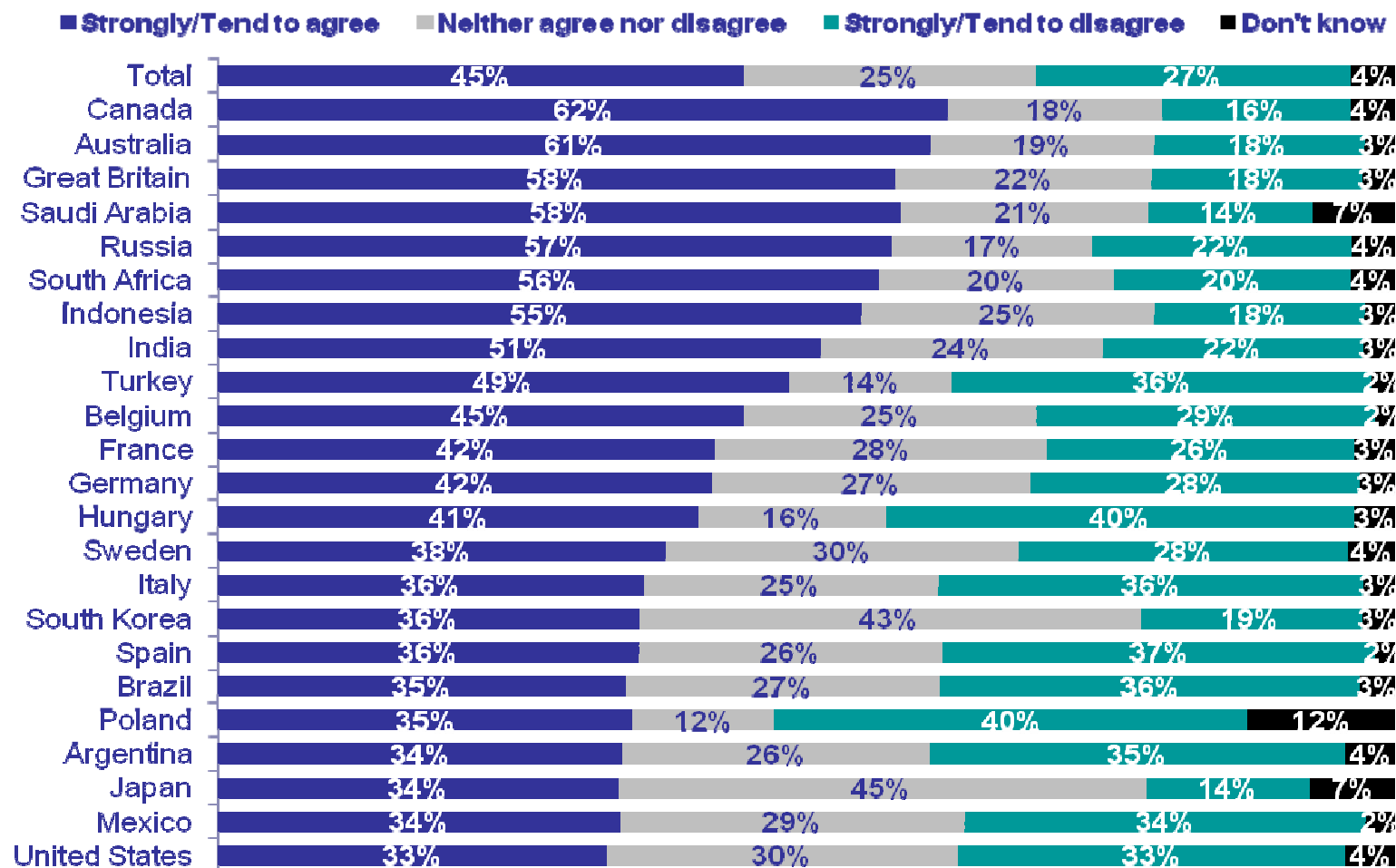


Please tell whether you agree or disagree with each of the following statements.
Base: All Respondents n=17,601

A Global @dvisory G@22
Immigration



PRIORITY SHOULD BE GIVEN TO IMMIGRANTS WITH HIGHER EDUCATION AND QUALIFICATIONS WHO CAN FILL SHORTAGES AMONG CERTAIN PROFESSIONS IN [COUNTRY]...

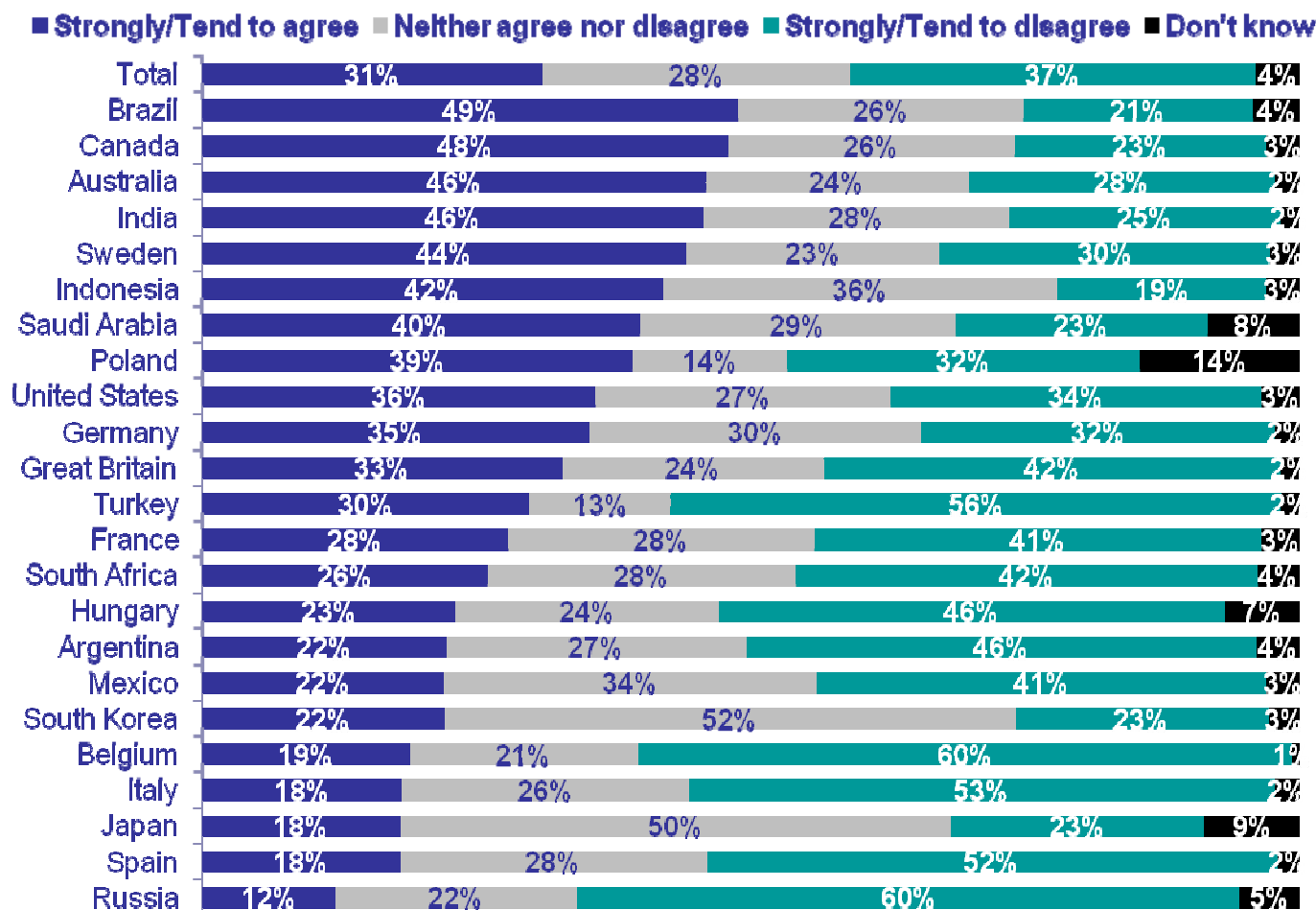


Please tell whether you agree or disagree with each of the following statements.
Base: All Respondents n=17,601

A Global @dvisory G@22
Immigration



IMMIGRANTS MAKE [COUNTRY] A MORE INTERESTING PLACE TO LIVE...

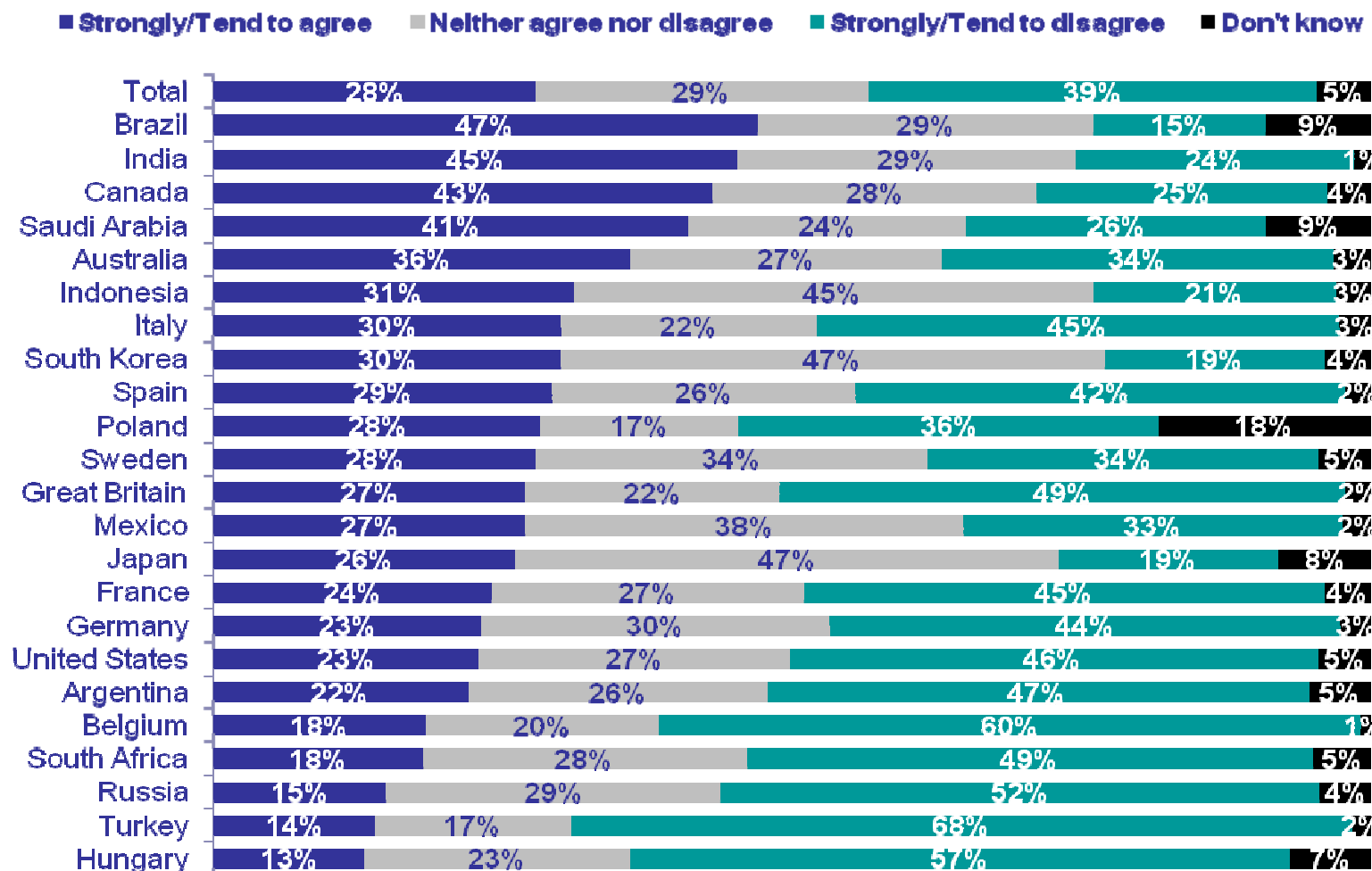


Please tell whether you agree or disagree with each of the following statements.
Base: All Respondents n=17,601

A Global @dvisory G@22
Immigration



IMMIGRATION IS GOOD FOR THE ECONOMY OF [COUNTRY]...



Please tell whether you agree or disagree with each of the following statements.
Base: All Respondents n=17,601

A Global @dvisory G@22
Immigration



About Ipsos

- We are an independent company among the large global research companies, and are owned and managed by research professionals.
- Our ambition: to make survey-based research one of the primary means to understand contemporary society and economy. And to make Ipsos a strategic partner for those who wish to better understand the world and play an active part in it, with lasting success.
- Our experts are specialised in five areas of activity: we assess market potential and interpret market trends, develop and test emergent or existing products or services and build brands, test advertising, study audience responses to various media, and measure public opinion on issues and reputation.
- We have 10,000 employees working in wholly owned operations in 66 countries, and regularly conduct research in over 100 countries.
- Founded in 1975 by Jean-Marc Lech and Didier Truchot, Ipsos has been publicly traded since 1999. In 2010, Ipsos' revenues exceeded 1B Euros.

Visit www.ipsos.com to learn more about Ipsos offerings and capabilities.

A Global @dvisory G@22
Immigration



For information about this and other *Global @dvisory* products contact:

John Wright

Senior Vice President and Managing Director, Public Opinion Polling

Ipsos Public Affairs +1 (416) 324-2002

john.wright@ipsos.com

Keren Gottfried

Research Manager, Public Opinion Polling

Ipsos Public Affairs +1 (416) 572-4481

keren.gottfried@ipsos.com

The Ipsos *Global @dvisor Omnibus* is a monthly, online survey of consumer citizens in 24 countries and produces syndicated reports and studies specifically tailored to the needs of corporations, advertising and PR agencies, and governments. For information contact:

Chris Deeney

Senior Vice President and Managing Director, Omnibus Division

Ipsos Public Affairs +1 (312) 665-0551

chris.deeney@ipsos.com

Visit www.ipsos.com for information about all of our products and services.

Copyright Ipsos 2010. All rights reserved. The contents of this publication constitute the sole and exclusive property of Ipsos.

*A Global @dvisory G@22
Immigration*